

These instructions are suitable for all Standard Differ, Masterkeyed and 1 & 3 Star Security Cylinders.

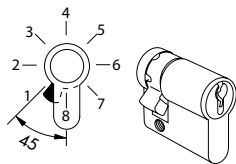
WARNING

Care should be taken to prepare doors accurately and to fit lock cases squarely within the door. Cylinders must not be forced into position as this could damage the cylinder and prevent its proper functioning.

Cylinder thumb turns are designed to operate the deadlocking/bolt mechanism and should NOT be used to pull open the door. Using the thumb turn to pull open the door may cause damage to the product and invalidate any warranty.

For further information please go to: www.access2.com

Note that single cylinders can have alternative cam positions (Tigris® Plus and Tigris® Premier only).



IMPORTANT information and instructions to ensure warranty validity

This document includes important user instructions and warranty information. Please ensure a copy of these instructions remains available to the product user after installation.



This cylinder offers resistance to the commonly used types of attack. No specific security hardware is required,

but installing a three star cylinder in conjunction with security hardware complying with TS007 will increase attack resistance still further.

Security hardware can be of several types, including a handle with a reinforced backplate, an escutcheon or a device which is concealed behind the handle backplate. In all cases, the purpose is to protect your cylinder from force attack.



Three Star cylinders have a **SNAP** feature which must be on the external face of the door.

Take special care on installation to avoid damaging the cylinder or activating the SNAP feature through the use of undue force (See Pre-Installation section).

Note: If a thumbturn cylinder is attacked it will lock in position. To release the cylinder you must either pull or push the thumbturn (model dependant) and then turn to release. **PLEASE CHECK YOUR MODEL OF CYLINDER.**



This cylinder offers resistance to many types of attack. It is designed to be used in conjunction with two star security door

hardware to ensure enhanced resistance to all commonly used attack methods. Therefore this product **MUST** be used in conjunction with two star security door hardware meeting TS007 to ensure security.

Such hardware can be recognised by the two star marking which may either be visible from the outside on an installed handle or, failing this, will be visible once the outside handle has been removed.

Security hardware can be of several types, including a handle with a reinforced backplate, an escutcheon or a device which is concealed behind the handle backplate. In all cases, the purpose is to protect your cylinder from force attack.

DO NOT lubricate the cylinder with oil or graphite.

Clean and lubricate cylinders every 6 months using Tigris® spray lubricant only.

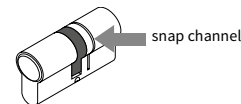
Cylinders with Classroom Function are designed so that the turn will only UNLOCK the door and are therefore only used in an emergency. As the thumbturn is rarely used, it is **VITAL** that **AT THE END OF EACH TERM** (or every three months) that the cylinder is lubricated, the deadbolt is thrown to the locked position by key with the door ajar and the thumbturn is used to withdraw the deadbolt.

Further information on warranty and warranty care and lubrication cycles is available on www.access2.com/Page/MasterkeyDocumentLibrary.aspx

3 Star cylinders are fitted with a high security feature which must be checked PRIOR to the cylinder being installed.

Please complete the following operational check procedure before installation:

1. Check the cylinder body is not snapped, bent or mis-aligned.
2. Check the snap channel of the cylinder is an equal distance around the cylinder body.



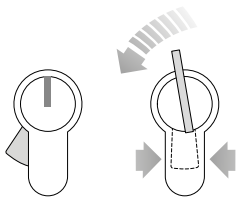
3. Insert a key and rotate fully to operate the CAM – complete three full rotations.
4. Turn the thumbturn to operate the CAM – complete three full rotations.
5. For a double cylinder repeat step 3 on the internal side.

Once this check procedure is completed successfully the security sticker can be removed and the cylinder installed.

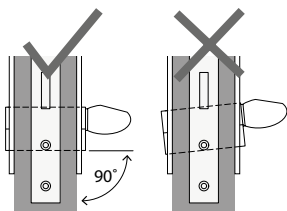
When the security sticker has been removed, cylinders that are subsequently bent, snapped or damaged due to installation will not be covered by warranty.

INSTALLATION

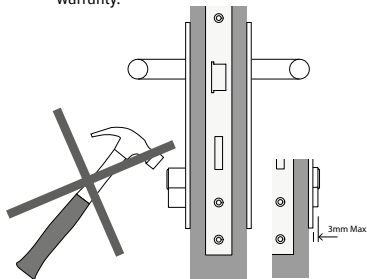
1. Using the key or thumbturn set the cam in the centre of the cylinder body. **Do not use force.**



2. It is advisable to remove or loosen the fixings on backplates or escutcheons if already fitted prior to installation of the cylinder. Insert the cylinder into the lock case making sure it is horizontal and at 90° to the door face before fully tightening the escutcheon/backplate fixings.

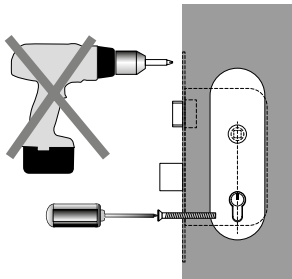


3. **DO NOT FORCE** the cylinder into place as this will damage the cylinder and lockcase and invalidate the warranty.

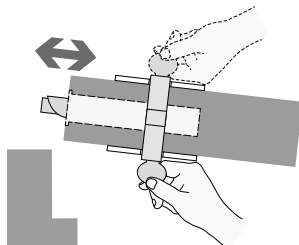


The cylinder may project a Max. 3mm from the face of the door furniture.

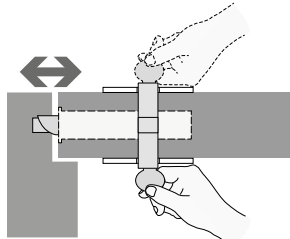
4. Tighten the cylinder retaining screw. **DO NOT USE POWER TOOLS.**



5. With the door open, first check the cylinder operates the lock smoothly from both sides by using the key/thumbturn (as appropriate).

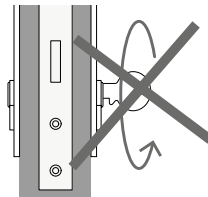


6. Ensure the door latches correctly and that the deadbolt (if appropriate) throws smoothly into the keeper. Adjust strike plates accordingly.



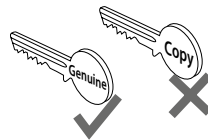
OPERATION

Make sure the key is inserted fully into the cylinder before turning. **DO NOT** use force to turn the key.

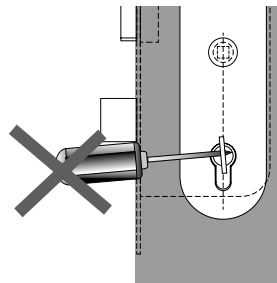


DO NOT use the key bow to pull the door open or closed.

For our unrestricted cylinder ranges where keyblanks are available; it is likely that non genuine key blanks and in particular those that are shorter, will operate the cylinder intermittently. Please use only GENUINE Tigris™ keys. To order additional keys please visit www.access2.com



DO NOT insert objects to increase the torque on the key bow.



DO NOT FORCE the thumbturn or key with a device to increase leverage e.g mole grips.

