

tedee



Enter in a new way.

tedee keypad - Data Sheet

ACCESS 2
SECURITY | CONTROL | ACCESS



tedee keypad

Unlock the door without an app or smartphone: simply by entering a PIN.

Choose from five to eight digits - set, change, and assign via mobile app. Manage up to 100 codes and share them in your favourite way.

Setup in minutes, power by three AAA batteries.

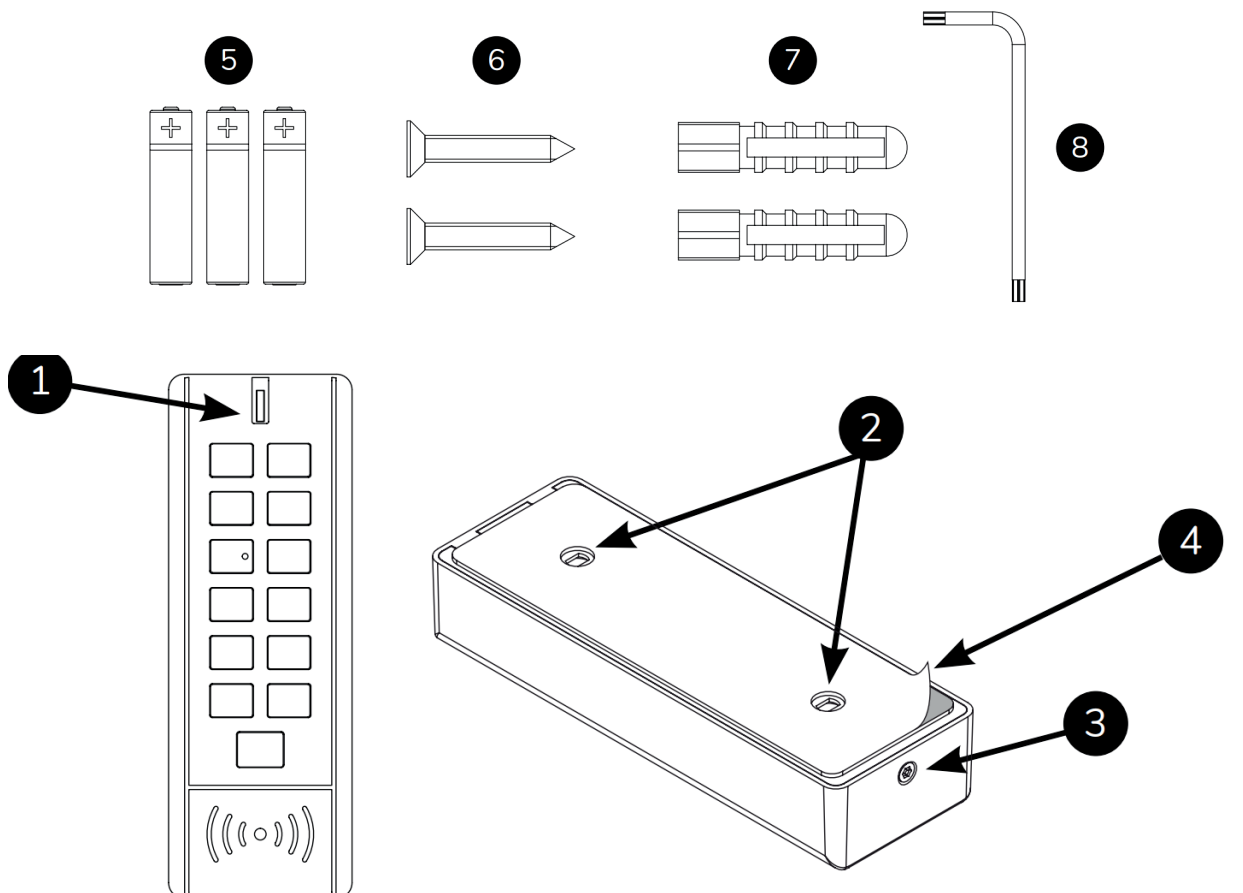
Install with adhesive or anti-tamper screws - even outdoors as tedee keypad is IP65.

tedee keypad

Technical Specification

Model	TKV 1.0
Weight	120 g (without batteries), 155 g (with 3 AAA batteries)
Dimensions	48mm x 135mm x 28mm
Power supply	3 AAA batteries included
Battery life	as stated by the battery manufacturer
Bluetooth communication	Bluetooth BLE 5.0 2,4 Ghz
IP protection class	IP65

Whats in the box:



- 1. Keyboard
- 2. Mounting holes
- 3. Mounting screw

- 4. Double-sided adhesive tape
- 5. AAA batteries (3x)

- 6. Mounting screws (2x)
- 7. Wall plugs (2x)
- 8. Customized Torx key

Enter the smart world.

Send an email to **sales@access.com** or
call **+44 (0)191 215 0530** to place an order

access2.com



[Access2](#)



[Access2hq](#)



[Access2hq](#)

Google and Google Home are trademarks of Google LLC. Amazon Alexa and all related marks are trademarks of Amazon.com, Inc. or its affiliates. Apple, HomeKit, and Siri are trademarks of Apple Inc. registered in the U.S. and other countries. iOS is a trademark or registered trademark of Cisco in the U.S. and other countries and is used under license. All other trademarks are properties of their respective owners.